

Acta Crystallographica Section E

Structure Reports

Online

ISSN 1600-5368

4,4'-Dimethoxy-2,2'-[methylazanediy]-bis(methylene)diphenol

 Chatchai Veranitisagul,^a Attaphon Kaewvilai,^b Tanwawan Duangthongyou,^c Nattamon Koonsaeng^c and Apirat Laobuthee^{b*}
^aDepartment of Materials and Metallurgical Engineering, Faculty of Engineering, Rajamangala University of Technology Thanyaburi, Pathumthani 12110, Thailand,

^bDepartment of Materials Engineering, Faculty of Engineering, Kasetsart University, Bangkok 10900, Thailand, and ^cDepartment of Chemistry, Faculty of Science, Kasetsart University, Bangkok 10900, Thailand

Correspondence e-mail: fengapl@ku.ac.th

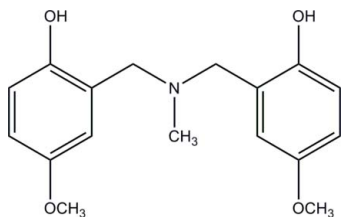
Received 11 May 2012; accepted 13 June 2012

 Key indicators: single-crystal X-ray study; $T = 296$ K; mean $\sigma(\text{C}-\text{C}) = 0.002$ Å; R factor = 0.046; wR factor = 0.160; data-to-parameter ratio = 17.6.

The title compound, $\text{C}_{17}\text{H}_{21}\text{NO}_4$, shows an intramolecular hydrogen bond between a phenol OH group and the N atom. In the crystal, molecules are connected by pairs of $\text{O}-\text{H}\cdots\text{O}$ hydrogen bonds into inversion dimers.

Related literature

For the synthesis of N,N -bis(2-hydroxybenzyl)alkylamines, see: Laobuthee *et al.* (2003). For their metal-responsive properties, see: Veranitisagul *et al.* (2011). For their use in the synthesis of macrocyclic molecules, see: Rungsimanon *et al.* (2008).



Experimental

Crystal data

 $\text{C}_{17}\text{H}_{21}\text{NO}_4$
 $M_r = 303.35$

 Monoclinic, $P2_1/c$
 $a = 13.3384$ (9) Å
 $b = 8.5634$ (5) Å
 $c = 14.1021$ (8) Å
 $\beta = 99.340$ (2)°
 $V = 1589.42$ (17) Å³
 $Z = 4$
 Mo $K\alpha$ radiation
 $\mu = 0.09$ mm⁻¹
 $T = 296$ K
 $0.54 \times 0.54 \times 0.28$ mm

Data collection

 Siemens P4 diffractometer
 8022 measured reflections
 3649 independent reflections

 2711 reflections with $I > 2\sigma(I)$
 $R_{\text{int}} = 0.020$

Refinement

 $R[F^2 > 2\sigma(F^2)] = 0.046$
 $wR(F^2) = 0.160$
 $S = 1.03$
 3649 reflections
 207 parameters

 H atoms treated by a mixture of independent and constrained refinement
 $\Delta\rho_{\text{max}} = 0.30$ e Å⁻³
 $\Delta\rho_{\text{min}} = -0.21$ e Å⁻³
Table 1

Hydrogen-bond geometry (Å, °).

$D-H\cdots A$	$D-H$	$H\cdots A$	$D\cdots A$	$D-H\cdots A$
$\text{O2}-\text{H}''\cdots\text{N}$	0.98 (3)	1.78 (3)	2.6679 (16)	149 (2)
$\text{O1}-\text{H}'\cdots\text{O2}^i$	0.88 (3)	1.89 (3)	2.7550 (16)	169 (2)

 Symmetry code: (i) $-x + 1, -y, -z + 1$.

Data collection: *XSCANS* (Siemens, 1992); cell refinement: *XSCANS*; data reduction: *XSCANS*; program(s) used to solve structure: *SHELXS97* (Sheldrick, 2008); program(s) used to refine structure: *SHELXL97* (Sheldrick, 2008); molecular graphics: *SHELXTL* (Sheldrick, 2008); software used to prepare material for publication: *SHELXL97*.

This work was supported by the Thailand Research Fund (grant No. MRG5480046). The authors would like to thank the Department of Chemistry, Faculty of Science, Kasetsart University, for partial support.

Supplementary data and figures for this paper are available from the IUCr electronic archives (Reference: NC2280).

References

- Laobuthee, A., Ishida, H. & Chirachanchai, S. (2003). *J. Incl. Phenom. Macrocycl. Chem.* **47**, 179–185.
 Rungsimanon, T., Laobuthee, A., Miyata, M. & Chirachanchai, S. (2008). *J. Incl. Phenom. Macrocycl. Chem.* **62**, 333–338.
 Sheldrick, G. M. (2008). *Acta Cryst.* **A64**, 112–122.
 Siemens (1992). *XSCANS*. Siemens Analytical X-ray Instruments Inc., Madison, Wisconsin, USA.
 Veranitisagul, C., Kaewvilai, A., Sangngern, S., Wattanathana, W., Suramitr, S., Koonsaeng, N. & Laobuthee, A. (2011). *Int. J. Mol. Sci.* **12**, 4365–4377.

supplementary materials

Acta Cryst. (2012). E68, o2139 [doi:10.1107/S1600536812026694]

4,4'-Dimethoxy-2,2'-[methylazanediy]bis(methylene)diphenol

Chatchai Veranitisagul, Attaphon Kaewvilai, Tanwawan Duangthongyou, Nattamon Koonsaeng and Apirat Laobuthee

Experimental

The title compound, *N,N*-bis(5-methoxy-2-hydroxybenzyl) methylamine was prepared elsewhere (Laobuthee *et al.*, 2003). Recrystallized in 2-propanol, colorless single crystals suitable for X-ray diffraction were obtained by slow evaporation of the solvent after several days.

Refinement

All H atoms of the compound were placed in the calculated positions with C—H = 0.96 Å and included in the final cycles of refinement in a rigid model, $U_{\text{iso}}(\text{H}) = 1.2 U_{\text{eq}}(\text{H})$. Except H atom of O atoms were located in different Fourier map and restrained to their hosts.

Computing details

Data collection: *XSCANS* (Siemens, 1992); cell refinement: *XSCANS* (Siemens, 1992); data reduction: *XSCANS* (Siemens, 1992); program(s) used to solve structure: *SHELXS97* (Sheldrick, 2008); program(s) used to refine structure: *SHELXL97* (Sheldrick, 2008); molecular graphics: *SHELXTL* (Sheldrick, 2008); software used to prepare material for publication: *SHELXL97* (Sheldrick, 2008).

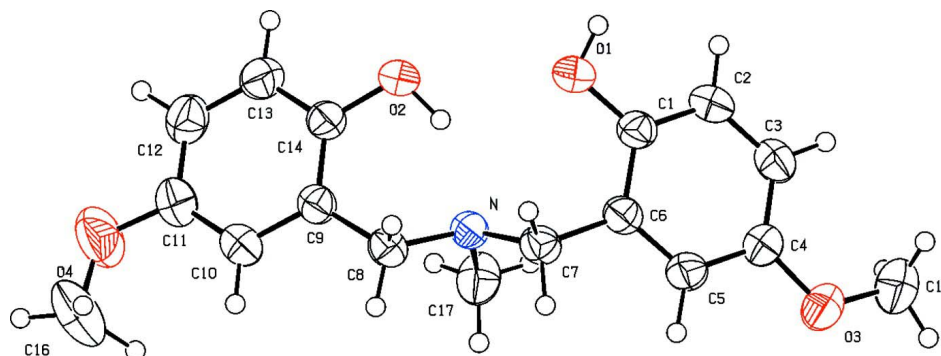


Figure 1

Molecular structure of the title compound with labelling and displacement ellipsoids drawn at the 50% probability level.

4,4'-Dimethoxy-2,2'-[methylazanediy]bis(methylene)diphenol

Crystal data

$\text{C}_{17}\text{H}_{21}\text{NO}_4$

$M_r = 303.35$

Monoclinic, $P2_1/c$

$a = 13.3384 (9) \text{ \AA}$

$b = 8.5634 (5) \text{ \AA}$

$c = 14.1021 (8) \text{ \AA}$

$\beta = 99.340 (2)^\circ$
 $V = 1589.42 (17) \text{ \AA}^3$
 $Z = 4$
 $F(000) = 648$
 $D_x = 1.268 \text{ Mg m}^{-3}$
 Mo $K\alpha$ radiation, $\lambda = 0.71073 \text{ \AA}$

Cell parameters from 3446 reflections
 $\theta = 2.8\text{--}27.3^\circ$
 $\mu = 0.09 \text{ mm}^{-1}$
 $T = 296 \text{ K}$
 Block, colourless
 $0.54 \times 0.54 \times 0.28 \text{ mm}$

Data collection

Siemens P4
 diffractometer
 Radiation source: fine-focus sealed tube
 Graphite monochromator
 ω scans
 8022 measured reflections
 3649 independent reflections

2711 reflections with $I > 2\sigma(I)$
 $R_{\text{int}} = 0.020$
 $\theta_{\text{max}} = 27.5^\circ$, $\theta_{\text{min}} = 1.6^\circ$
 $h = -17 \rightarrow 16$
 $k = -11 \rightarrow 8$
 $l = -18 \rightarrow 12$

Refinement

Refinement on F^2
 Least-squares matrix: full
 $R[F^2 > 2\sigma(F^2)] = 0.046$
 $wR(F^2) = 0.160$
 $S = 1.03$
 3649 reflections
 207 parameters
 0 restraints
 Primary atom site location: structure-invariant
 direct methods

Secondary atom site location: difference Fourier
 map
 Hydrogen site location: inferred from
 neighbouring sites
 H atoms treated by a mixture of independent
 and constrained refinement
 $w = 1/[\sigma^2(F_o^2) + (0.0949P)^2 + 0.2159P]$
 where $P = (F_o^2 + 2F_c^2)/3$
 $(\Delta/\sigma)_{\text{max}} < 0.001$
 $\Delta\rho_{\text{max}} = 0.30 \text{ e \AA}^{-3}$
 $\Delta\rho_{\text{min}} = -0.21 \text{ e \AA}^{-3}$

Special details

Geometry. All e.s.d.'s (except the e.s.d. in the dihedral angle between two l.s. planes) are estimated using the full covariance matrix. The cell e.s.d.'s are taken into account individually in the estimation of e.s.d.'s in distances, angles and torsion angles; correlations between e.s.d.'s in cell parameters are only used when they are defined by crystal symmetry. An approximate (isotropic) treatment of cell e.s.d.'s is used for estimating e.s.d.'s involving l.s. planes.

Refinement. Refinement of F^2 against ALL reflections. The weighted R -factor wR and goodness of fit S are based on F^2 , conventional R -factors R are based on F , with F set to zero for negative F^2 . The threshold expression of $F^2 > \sigma(F^2)$ is used only for calculating R -factors(gt) *etc.* and is not relevant to the choice of reflections for refinement. R -factors based on F^2 are statistically about twice as large as those based on F , and R -factors based on ALL data will be even larger.

Fractional atomic coordinates and isotropic or equivalent isotropic displacement parameters (\AA^2)

	<i>x</i>	<i>y</i>	<i>z</i>	$U_{\text{iso}}^*/U_{\text{eq}}$
O1	0.45389 (9)	0.03013 (15)	0.59042 (8)	0.0530 (3)
O2	0.34001 (8)	0.00867 (16)	0.40230 (8)	0.0589 (4)
C6	0.33681 (11)	0.08049 (17)	0.69636 (10)	0.0404 (3)
N	0.22980 (9)	0.08969 (14)	0.53635 (8)	0.0377 (3)
C1	0.42488 (11)	0.00508 (18)	0.67825 (10)	0.0418 (3)
C7	0.27517 (11)	0.18108 (17)	0.62086 (10)	0.0429 (3)
H7A	0.2216	0.2321	0.6483	0.051*
H7B	0.3185	0.2616	0.6009	0.051*
C8	0.18208 (11)	0.19071 (18)	0.45720 (10)	0.0435 (3)
H8A	0.2238	0.2826	0.4537	0.052*
H8B	0.1161	0.2248	0.4696	0.052*

C9	0.16962 (11)	0.10444 (17)	0.36246 (10)	0.0404 (3)
C5	0.30850 (12)	0.0610 (2)	0.78563 (10)	0.0469 (4)
H5A	0.2507	0.1115	0.7990	0.056*
C4	0.36425 (13)	-0.0320 (2)	0.85596 (11)	0.0494 (4)
O3	0.33023 (11)	-0.03631 (18)	0.94292 (9)	0.0712 (4)
C10	0.08049 (12)	0.1124 (2)	0.29590 (11)	0.0492 (4)
H10A	0.0255	0.1694	0.3102	0.059*
C2	0.47847 (12)	-0.0911 (2)	0.74694 (12)	0.0504 (4)
H2A	0.5354	-0.1438	0.7333	0.061*
C14	0.25065 (12)	0.01707 (19)	0.33939 (10)	0.0443 (4)
C3	0.44897 (12)	-0.1103 (2)	0.83577 (12)	0.0515 (4)
H3A	0.4858	-0.1754	0.8815	0.062*
C13	0.24199 (14)	-0.0611 (2)	0.25243 (12)	0.0543 (4)
H13A	0.2959	-0.1207	0.2382	0.065*
C12	0.15387 (15)	-0.0506 (2)	0.18727 (12)	0.0579 (4)
H12A	0.1487	-0.1020	0.1286	0.069*
O4	-0.01176 (13)	0.0372 (2)	0.13858 (11)	0.0920 (5)
C11	0.07316 (13)	0.0356 (2)	0.20820 (12)	0.0557 (4)
C17	0.15734 (14)	-0.0249 (2)	0.56118 (13)	0.0583 (5)
H17A	0.1291	-0.0826	0.5048	0.088*
H17B	0.1038	0.0279	0.5863	0.088*
H17C	0.1914	-0.0953	0.6088	0.088*
C15	0.37548 (17)	-0.1441 (3)	1.01268 (12)	0.0693 (5)
H15A	0.3448	-0.1346	1.0694	0.104*
H15B	0.4469	-0.1228	1.0284	0.104*
H15C	0.3656	-0.2482	0.9877	0.104*
C16	-0.08619 (18)	0.1436 (3)	0.14472 (19)	0.0986 (8)
H16A	-0.1401	0.1305	0.0913	0.148*
H16B	-0.0588	0.2471	0.1435	0.148*
H16C	-0.1122	0.1283	0.2036	0.148*
H'	0.5192 (19)	0.008 (3)	0.5987 (15)	0.073 (6)*
H''	0.323 (2)	0.032 (3)	0.4657 (19)	0.100 (8)*

Atomic displacement parameters (\AA^2)

	U^{11}	U^{22}	U^{33}	U^{12}	U^{13}	U^{23}
O1	0.0356 (6)	0.0755 (8)	0.0493 (6)	0.0063 (5)	0.0109 (5)	0.0030 (5)
O2	0.0376 (6)	0.0946 (10)	0.0453 (6)	0.0165 (6)	0.0090 (5)	0.0014 (6)
C6	0.0375 (7)	0.0397 (7)	0.0427 (7)	0.0025 (6)	0.0029 (6)	-0.0076 (6)
N	0.0360 (6)	0.0384 (6)	0.0387 (6)	0.0005 (5)	0.0058 (5)	0.0017 (5)
C1	0.0344 (7)	0.0474 (8)	0.0435 (7)	-0.0011 (6)	0.0055 (6)	-0.0052 (6)
C7	0.0419 (8)	0.0393 (8)	0.0467 (7)	0.0051 (6)	0.0050 (6)	-0.0050 (6)
C8	0.0412 (7)	0.0439 (8)	0.0450 (7)	0.0074 (6)	0.0059 (6)	0.0043 (6)
C9	0.0383 (7)	0.0410 (8)	0.0420 (7)	0.0002 (6)	0.0069 (6)	0.0076 (6)
C5	0.0448 (8)	0.0510 (9)	0.0449 (8)	0.0096 (7)	0.0074 (6)	-0.0088 (6)
C4	0.0500 (9)	0.0577 (10)	0.0404 (7)	0.0045 (7)	0.0070 (6)	-0.0038 (7)
O3	0.0790 (9)	0.0930 (10)	0.0435 (6)	0.0266 (8)	0.0159 (6)	0.0074 (6)
C10	0.0409 (8)	0.0513 (9)	0.0538 (8)	0.0043 (7)	0.0033 (6)	0.0027 (7)
C2	0.0381 (8)	0.0556 (9)	0.0578 (9)	0.0102 (7)	0.0083 (7)	0.0000 (7)
C14	0.0393 (8)	0.0524 (9)	0.0422 (7)	0.0031 (6)	0.0095 (6)	0.0089 (6)

C3	0.0467 (9)	0.0544 (9)	0.0511 (8)	0.0087 (7)	0.0009 (7)	0.0045 (7)
C13	0.0572 (10)	0.0590 (10)	0.0490 (8)	0.0108 (8)	0.0147 (7)	0.0017 (7)
C12	0.0697 (12)	0.0567 (10)	0.0461 (8)	0.0025 (8)	0.0061 (8)	-0.0055 (7)
O4	0.0724 (10)	0.1111 (13)	0.0798 (10)	0.0147 (9)	-0.0259 (8)	-0.0273 (9)
C11	0.0526 (10)	0.0588 (10)	0.0517 (9)	-0.0012 (8)	-0.0033 (7)	-0.0002 (7)
C17	0.0596 (10)	0.0636 (11)	0.0506 (9)	-0.0218 (8)	0.0057 (7)	0.0065 (8)
C15	0.0836 (14)	0.0755 (13)	0.0480 (9)	-0.0017 (11)	0.0080 (9)	0.0067 (9)
C16	0.0667 (14)	0.1017 (19)	0.1129 (19)	0.0057 (13)	-0.0293 (13)	0.0068 (16)

Geometric parameters (Å, °)

O1—C1	1.3731 (18)	O3—C15	1.411 (2)
O1—H'	0.88 (2)	C10—C11	1.390 (2)
O2—C14	1.3673 (19)	C10—H10A	0.9300
O2—H''	0.98 (3)	C2—C3	1.383 (2)
C6—C5	1.382 (2)	C2—H2A	0.9300
C6—C1	1.400 (2)	C14—C13	1.385 (2)
C6—C7	1.5058 (19)	C3—H3A	0.9300
N—C17	1.459 (2)	C13—C12	1.372 (3)
N—C8	1.4726 (17)	C13—H13A	0.9300
N—C7	1.4714 (17)	C12—C11	1.376 (3)
C1—C2	1.379 (2)	C12—H12A	0.9300
C7—H7A	0.9700	O4—C16	1.361 (3)
C7—H7B	0.9700	O4—C11	1.373 (2)
C8—C9	1.512 (2)	C17—H17A	0.9600
C8—H8A	0.9700	C17—H17B	0.9600
C8—H8B	0.9700	C17—H17C	0.9600
C9—C10	1.392 (2)	C15—H15A	0.9600
C9—C14	1.396 (2)	C15—H15B	0.9600
C5—C4	1.390 (2)	C15—H15C	0.9600
C5—H5A	0.9300	C16—H16A	0.9600
C4—O3	1.3754 (19)	C16—H16B	0.9600
C4—C3	1.383 (2)	C16—H16C	0.9600
C1—O1—H'	105.3 (14)	C1—C2—H2A	119.5
C14—O2—H''	105.9 (16)	C3—C2—H2A	119.5
C5—C6—C1	118.17 (13)	O2—C14—C13	119.18 (14)
C5—C6—C7	120.97 (13)	O2—C14—C9	120.23 (14)
C1—C6—C7	120.86 (13)	C13—C14—C9	120.59 (15)
C17—N—C8	110.81 (12)	C2—C3—C4	119.39 (14)
C17—N—C7	111.38 (12)	C2—C3—H3A	120.3
C8—N—C7	111.83 (11)	C4—C3—H3A	120.3
O1—C1—C2	122.48 (14)	C12—C13—C14	120.02 (16)
O1—C1—C6	117.40 (13)	C12—C13—H13A	120.0
C2—C1—C6	120.12 (14)	C14—C13—H13A	120.0
N—C7—C6	111.97 (11)	C13—C12—C11	120.42 (16)
N—C7—H7A	109.2	C13—C12—H12A	119.8
C6—C7—H7A	109.2	C11—C12—H12A	119.8
N—C7—H7B	109.2	C16—O4—C11	119.14 (17)
C6—C7—H7B	109.2	C12—C11—O4	115.80 (16)

H7A—C7—H7B	107.9	C12—C11—C10	120.00 (16)
N—C8—C9	110.78 (12)	O4—C11—C10	124.19 (17)
N—C8—H8A	109.5	N—C17—H17A	109.5
C9—C8—H8A	109.5	N—C17—H17B	109.5
N—C8—H8B	109.5	H17A—C17—H17B	109.5
C9—C8—H8B	109.5	N—C17—H17C	109.5
H8A—C8—H8B	108.1	H17A—C17—H17C	109.5
C10—C9—C14	118.55 (14)	H17B—C17—H17C	109.5
C10—C9—C8	122.11 (13)	O3—C15—H15A	109.5
C14—C9—C8	119.32 (13)	O3—C15—H15B	109.5
C6—C5—C4	121.71 (14)	H15A—C15—H15B	109.5
C6—C5—H5A	119.1	O3—C15—H15C	109.5
C4—C5—H5A	119.1	H15A—C15—H15C	109.5
O3—C4—C3	124.69 (15)	H15B—C15—H15C	109.5
O3—C4—C5	115.86 (14)	O4—C16—H16A	109.5
C3—C4—C5	119.44 (14)	O4—C16—H16B	109.5
C4—O3—C15	118.27 (14)	H16A—C16—H16B	109.5
C11—C10—C9	120.40 (15)	O4—C16—H16C	109.5
C11—C10—H10A	119.8	H16A—C16—H16C	109.5
C9—C10—H10A	119.8	H16B—C16—H16C	109.5
C1—C2—C3	121.09 (14)		
C5—C6—C1—O1	-177.73 (14)	C8—C9—C10—C11	177.84 (15)
C7—C6—C1—O1	1.8 (2)	O1—C1—C2—C3	178.10 (15)
C5—C6—C1—C2	2.8 (2)	C6—C1—C2—C3	-2.5 (3)
C7—C6—C1—C2	-177.69 (14)	C10—C9—C14—O2	178.92 (14)
C17—N—C7—C6	63.61 (16)	C8—C9—C14—O2	0.6 (2)
C8—N—C7—C6	-171.79 (11)	C10—C9—C14—C13	-0.6 (2)
C5—C6—C7—N	-115.64 (15)	C8—C9—C14—C13	-178.94 (15)
C1—C6—C7—N	64.88 (18)	C1—C2—C3—C4	0.1 (3)
C17—N—C8—C9	-75.11 (16)	O3—C4—C3—C2	-176.96 (17)
C7—N—C8—C9	159.97 (12)	C5—C4—C3—C2	1.9 (3)
N—C8—C9—C10	135.83 (14)	O2—C14—C13—C12	-178.23 (16)
N—C8—C9—C14	-45.86 (18)	C9—C14—C13—C12	1.3 (3)
C1—C6—C5—C4	-0.8 (2)	C14—C13—C12—C11	-0.9 (3)
C7—C6—C5—C4	179.69 (15)	C13—C12—C11—O4	-179.35 (18)
C6—C5—C4—O3	177.44 (15)	C13—C12—C11—C10	-0.2 (3)
C6—C5—C4—C3	-1.6 (2)	C16—O4—C11—C12	-166.6 (2)
C3—C4—O3—C15	-9.2 (3)	C16—O4—C11—C10	14.2 (3)
C5—C4—O3—C15	171.85 (17)	C9—C10—C11—C12	0.8 (3)
C14—C9—C10—C11	-0.5 (2)	C9—C10—C11—O4	179.97 (17)

Hydrogen-bond geometry (\AA , $^\circ$)

$D-H\cdots A$	$D-H$	$H\cdots A$	$D\cdots A$	$D-H\cdots A$
O2—H ⁱⁱ ...N	0.98 (3)	1.78 (3)	2.6679 (16)	149 (2)
O1—H ⁱ ...O2 ⁱ	0.88 (3)	1.89 (3)	2.7550 (16)	169 (2)

Symmetry code: (i) $-x+1, -y, -z+1$.